

PRINTRONIX®

GLOBAL PRINTING...ENABLED.

LASERLINE® – L1524 / L5500 PRINTERS



*Versatility for demanding
printing environments.*

The LaserLine series are rugged, high-speed printers specially built for demanding applications found in supply chain and distribution center environments. These printers combine laser quality and speed with the convenience and functionality of continuous forms printing.



LASERLINE – L1524 / L5500 PRINTERS

PRINTNET® ENTERPRISE, PSA®2 AND SAP™ R/3® READY

PrintNet Enterprise allows you to remotely monitor, manage and control all networked Printronix line matrix, laser and thermal printers from a single location. Printronix System Architecture (PSA2) gives all of our printers a common software architecture and R/3 system control interfaces for SAP environments. The LaserLine series was created to help you tackle your most demanding and exacting tasks.

THE LASERLINE SERIES CAN TACKLE A WIDE VARIETY OF MEDIA INCLUDING:

- Labels for mailing and publishing
- Drum labels for chemicals
- Plastic membership cards
- Apparel shipping labels and hang tags
- Grocery store shelf labels
- Compliance labels for major appliances
- Customer statements and bills
- Automobile window stickers
- Medical laboratory bar codes
- Tyvek law labels

INSURE OPTIMAL LASERLINE PERFORMANCE

Genuine Printronix Supplies are specifically designed to enhance the output quality and complement the features of all Printronix LaserLine printer systems. These products will provide performance, reliability and economy to support even your most critical printing, bar code and IS applications.

GENIUNE
PRINTRONIX®
SUPPLIES

CUSTOMER SUCCESS STUDY

PRINTRONIX L5000 LASER PRINTERS ALLOW MAJOR DISTRIBUTOR TO PRINT THOUSANDS OF HIGH-RESOLUTION BAR CODE LABELS DAILY

THE CLIENT:

Certified Grocers of California Ltd. is a major distributor of both food and non-food items to retail outlets throughout California.

THE PROBLEM:

Certified Grocer employs a just-in-time inventory model to ensure the highest quality and the broadest selection to customers throughout the United States. To respond efficiently, Certified Grocers uses scan labels in its automated warehouse operations to facilitate the selection and routing of product cases for delivery. From its Southern California warehouse, Certified Grocers trucks more than 700,000 cases of product each week to thousands of regional retail outlets. To manage this demand, the warehouse needed a printing solution capable of generating an average of 100,000 high-quality scan labels each day.

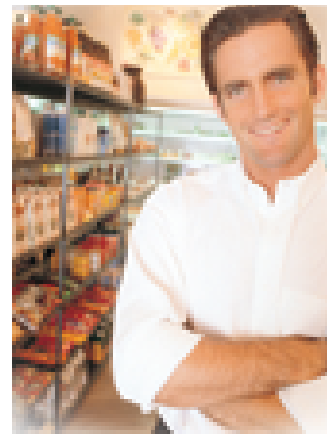
THE PRINTRONIX SOLUTION:

Understanding the customer's needs for a durable and reliable printer, Printronix presented Certified Grocer with a solution utilizing the Printronix L5000 laser printers and related applications. The adhesive bar code labels are generated quickly and maintain consistent high quality and scannability.

"The L5000 has the speed and the continuous-form laser printing capability that we wanted, along with a lot of flexibility for the future..."

We didn't have to modify our mainframe programs.... that allowed us to implement the new L5000 application very quickly. The production results have more than met our expectations."

BOB ASTAMENDI
Manager
Certified Grocers Data Center





PRINTRONIX®

GLOBAL PRINTING...ENABLED.



THE LASERLINE SERIES

The LaserLine series are rugged, high-speed laser printers specially built for industrial distribution centers, service bureaus and ERP environments.

LASERLINE L5520:

The L5520 cost effectively prints the highest quality image on a wide variety of media such as plastic cards, pressure sensitive labels and synthetics. It combines FlashFusion™ technology with continuous form printing to produce high-resolution forms and features PSA2 architecture, with a printing speed of 20 pages per minute and a duty cycle of 200,000.



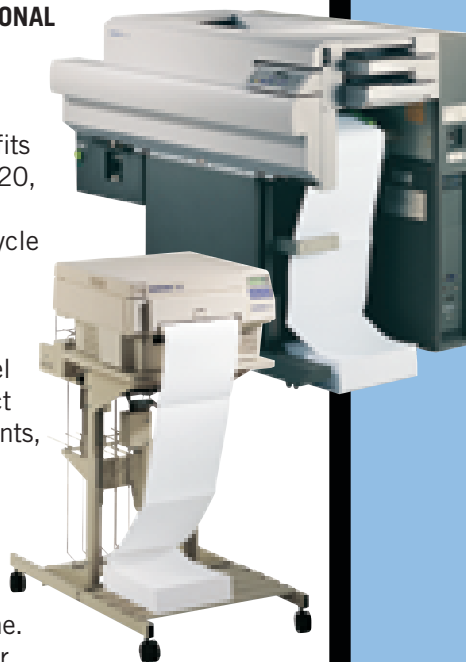
- **FLASH FUSION IMAGING SYSTEM ALLOWS PRINTING ON BOTH PLASTICS AND SYNTHETICS**
- **ABLE TO HANDLE FORMS FROM 7" TO 17.5" WIDE**
- **CHOOSE FROM OUR STANDARD PASSIVE PAPER STACKER OR THE OPTIONAL POWER PAPER STACKER**

LASERLINE L5535

The L5535 offers the same benefits as its companion model, the L5520, but with a printing speed of 35 pages per minutes and a duty cycle of 300,000.

THE L1524

Our powerhouse LaserLine model for the budget conscious. Perfect for mailing labels, billing statements, bar code labels and more. The L1524 can handle forms up to 10" wide and uses heat and pressure to perfectly print your image. Its compact size allows you to use it as a desktop machine. Or, place it in the optional power stacker for maximum functionality.



FEATURES AND BENEFITS

LaserLine printers excel in handling batch report, label and special forms applications

- **DESIGNED FOR HIGH PRODUCTION, LARGE CAPACITY PAPER SUPPLY AND OUTPUT STACKING**
- **PRECISION PIN FEED PROVIDES ACCURATE FORMS REGISTRATION**
- **UNIVERSAL CONNECTIVITY**
- **REMOTE CONFIGURATION AND MANAGEMENT WITH PRINTNET ENTERPRISE**
- **PRINTRONIX SYSTEM ARCHITECTURE (PSA2) FOR COMPATIBILITY WITH EXISTING APPLICATIONS**
- **ALL TOWER INTEGRATED IPDS SOLUTION FOR IBM AFP REQUIREMENTS**
- **AVAILABLE EMULATIONS INCLUDE PGL/VGL, PCL 5 AND WINDOWS DRIVERS**

LASERLINE – L1524 / L5500 PRINTERS

SPEED	L1524	L5535	L5520
Continuous Form	24 ppm (8.5" x 11")	35 ppm (11" x 8.5) 27 ppm (16" x 11")	20 ppm (11" x 8.5")
Cut Sheet (optional)		up to 27 ppm	
Duty Cycle (pp month)	50,000	300,000	200,000
Technology	Laser/heat pressure	LED/flash fusing	LED/flash fusing
Warm Up	<90 seconds	<60 seconds	<60 seconds
Toner	Dual component, dry 8K pages/bottle @ 5% print density	Dual component, dry pages/cartridge @ 4% print density (A4 or letter size)	Dual component, dry 21K pages/cartridge @ 4% print density (A4 or letter size)

CONTINUOUS FORMS (one part, tractor fed)	L1524	L5535	L5520
Min/max Form Width	4" to 10"	7" to 16"	7" to 16"
Optional Maximum Width		17.5"	17.5"
Min/max Form Length	1" to 99"	1" to 99"	1" to 99"
Adjustable Increments	1/8", 1/6", 1/2"	1/2", 1/6"	1/2", 1/6"

WEIGHT	L1524	L5535	L5520
Bond	18 to 42 lbs. 67 to 158 g/m2	17 to 44 lbs. 64 to 166 g/m2	18 to 44 lbs. 68 to 166 g/m2
Card/Label Stock	up to 100 lbs. up to 163 g/m2	up to 125 lbs. up to 262 g/m2	up to 125 lbs. up to 262 g/m2

PRINTABLE AREA	L1524	L5535	L5520
Print Line Length	3" to 8.25"	6" to 14.6"	6" to 14.6"
Print Form Length		±.33" from perf	±.33" from perf.

MEDIA TYPE	L1524	L5535	L5520
Electrostatic Laser Quality Paper	yes	yes	yes
Pressure Sensitive Laser Labels	yes	yes	yes
Synthetics		yes	yes
Plastic Card		yes	yes

MEDIA HANDLING	L1524	L5535	L5520
Standard Passive Stacker		yes	yes
Optional Power Stacker	yes	yes	yes
Power Stacker			
Paper Length	9" to 14"	7" to 14"	7" to 14"
Output Trays		250 sheet	

MEMORY	L1524	L5535	L5520
Standard	32 MB	32 MB	32 MB
Maximum	64 MB	64 MB	64 MBA

RESOLUTION	L1524	L5535	L5520
Standard (dots per inch)	300 x 300 dpi	300 x 300 dpi	300 x 300 dpi
Optional		240 x 240 dpi 400 x 400 dpi	240 x 240 dpi 400 x 400 dpi

EMULATIONS	L1524	L5535	L5520
Standard	LinePrinter Plus, PCL 5	LinePrinter Plus	LinePrinter Plus

PRINTER SOFTWARE	L1524, L5535, L5520
Standard Software	Printronix Printer Manager
Optional Languages	PGL/VGL, 4028 IPDS, PCL5 over all interfaces

INTERFACES	L1524, L5535, L5520
Standard	RS-232/ RS-422; IEEE 1284/Centronics parallel, diagnostic port
Optional	PrintNet 10/100 Base T, Dataproducts parallel
CT Optional:	Coax/Twinax with active parallel
Twinax	Integrated twinax interface for attachment to IBM Systems 36/38 and AS/400 directly or via IBM 5394 or 5494 workstation controller
Coax	Integrated coax interface for attachment to IBM 3174, 3274, or 3276 cluster controller
Switching	Auto switching between active ports

DIMENSIONS FOR PRINTER WITH OPTIONAL STACKER	
L5520	30" W x 48" H x 50.4" D
L5535	50.6" W x 47.5" H x 36.8" D
L1524	18.19" W x 9.76" H x 19.29" D

POWER	L1524	L5535	L5520
Line Voltage	120 or 240	200/220/240	200/220/240
Frequency	50 Hz/60 Hz	50 Hz/60 Hz	50 Hz/60 Hz

POWER CONSUMPTION	L1524	L5535	L5520
Printing	800 watts	4.3 KVA	2.94 KVA
Standby	42 watts Energy Star Compliance	0.5 KVA 15K BTU/hr when printing	0.3 KVA 10K BTU/hr when printing

ENVIRONMENT	L1524	L5535	L5520
Temperature	41°F - 95°F	50°F - 86°F	50°F - 80°F
Humidity (RH)	20% - 85%	30% - 80%	30% - 80%
Acoustic Noise	55 dBA	60 dBA	60 dBA
Maximum Altitude	7500 ft.	7500 ft.	7500 ft.

WEIGHT	L1524	L5535	L5520
Printer	55lbs.	500lbs.	353lbs.
Stacker	54lbs.	125lbs.	125lbs.